



S10

SYSTEM

Windows Mobile 6.1/6.5

624MHz CPU, 256MB RAM

Integrated 3.2MP Camera

256MB Internal Flash Data Storage

8GB TF Card for External Memory

VGA Display (480 X 640 portrait) Sunlight-readable Transflective Touch Screen

Integrated Speaker and Microphone

3000mAh Li-ion Battery (Standby 1 week. Normal Operation 12-18h)

GPS PERFORMANCE

Integrated High-Sensitivity Professional GPS Module and Measurement Level Antenna

12-channel Receiver

Support External Antenna

2-5m Positioning Accuracy

TTFF: Cold Start < 50 seconds

Warm Start < 38 seconds

Hot Start < 10 seconds

NMEA Protocol Support

COMMUNICATIONS

Integrated Bluetooth V2.0

Integrated WIFI Communication

GSM/GPRS, 8500/9000/1800/1900 Global 4 Frequency

PHYSICAL

Size: 158 X 85 X 25mm

Weight: 280g

Color: Grey

WORKING ENVIRONMENT

Operation Temperature: -20°C ~ +60°C

Storage Temperature: -30°C ~ +70°C

Drop: 1.2m Height on to a Concrete Ground

Waterproof: IPX5

STANDARD CONFIGURATION

Li-ion Battery

Stylus Pen and Tether

USB Data Cable and Charging Cable

AC Adapter (Input 110-240V, Output: 5V-100mA)



A MEMBER OF THE **Hudaco** GROUP

TEL: JHB (011) 878-2600 CPT (021) 932-0568 DBN (031) 717-6400
WEBSITE: www.viinstruments.co.za

CARLSON SURVCE

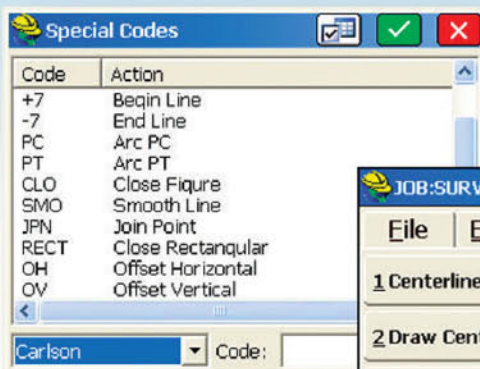
WORK WITH THE FIRST CHOICE IN DATA COLLECTION SOFTWARE

Carlson SurvCE's powerful features help you do more, do it accurately & in less time:

- **Powerful Roading:** favored by U.S. DOTs and heavy highway contractors in Spain, Australia and around the world
- **Advanced functionality** for staking intersections and cul-de-sacs using Carlson Road Network Files
- **Highly graphical and intuitive** user interface – the software prompts you so no detail is missed
- **Strong GIS features** for accurate data capture, including attribute data, that allows seamless links to Esri®
- **True versatility:** SurvCE runs on 99% of all GPS and total station equipment models in service today
- **Optimal Field-to-Finish:** no need to spend extra hours in the office to make drawings
- **Easy data exchange** due to rich support of CAD file formats and .dwg, .dgn, .shp
- **More field capabilities** with quick and easy volume calculation and ability to generate points from polylines
- **Cut/Fill stakeout** using surface files

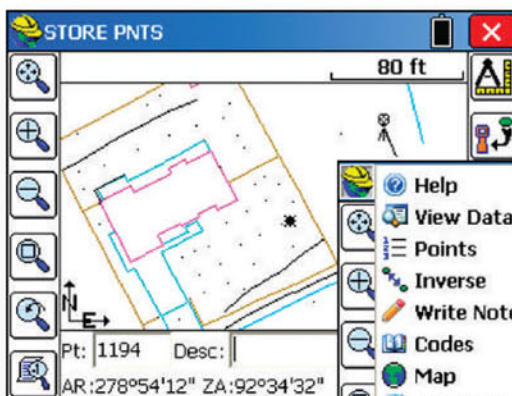
Top New Features of Carlson SurvCE now allow users to:

1. Compute/store multiple points based on stations/offsets definition at once
2. Use an optional profile to compute the elevations
3. "Shift" current GNSS corrections coming from a Reference Base or NTRIP network, to match an existing User Coordinate System with no need to produce a new localization.
4. Compute/store points at any horizontal alignment characteristic elements using also skew, intersect, PI, bisector, and more methods
5. Export ASCII point data in a flexible manner, controlling the fields exported and the data, geometry or non-geometry point data (GIS data) to export
6. Load TXT or CSV user-defined localization specific point data in Load Points: LAT/LON optional elevation and point coordinates
7. Inspect and stake locations on a surface in a control manner, using Point, OSNAP, Station/Offset if a horizontal alignment is used
8. View the surface and the current instrument reading in a section view style
9. Use a unique Feature Definition file for all your GIS features
10. Use predefined Notes for Feature Codes



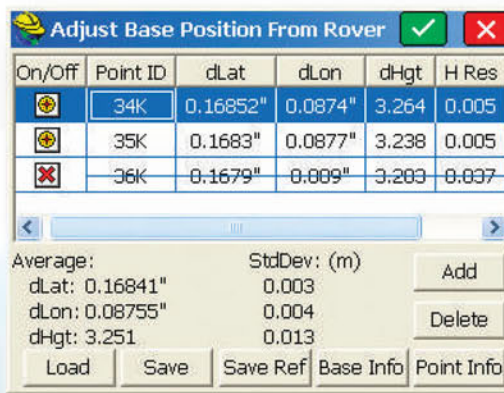
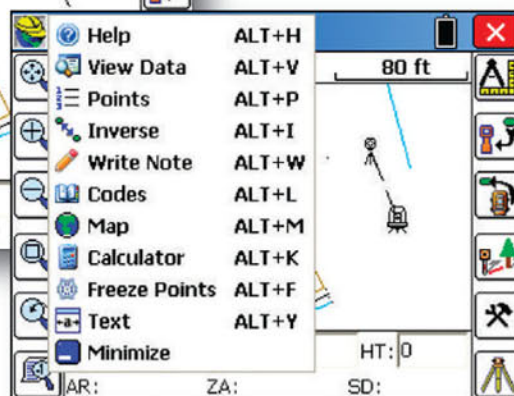
Feature Coding – Add numerous coding styles & functions

Tab-Based MENU Structure – All commands are visible in each menu



Collect points in the graphics mode

Hot List lets users jump to routines



Base Corrections from Rover feature



A MEMBER OF THE Hudaco GROUP

TEL: JHB (011) 878-2600 CPT (021) 932-0568 DBN (031) 717-6400
WEBSITE: www.viinstruments.co.za

Carlson Data Collection Software Provides Advanced Functionality, Ease-Of-Use & Superior Capability Combined With Excellent Service And Technical Support.